

# VISIO SYSTEM

## Sample measurement device

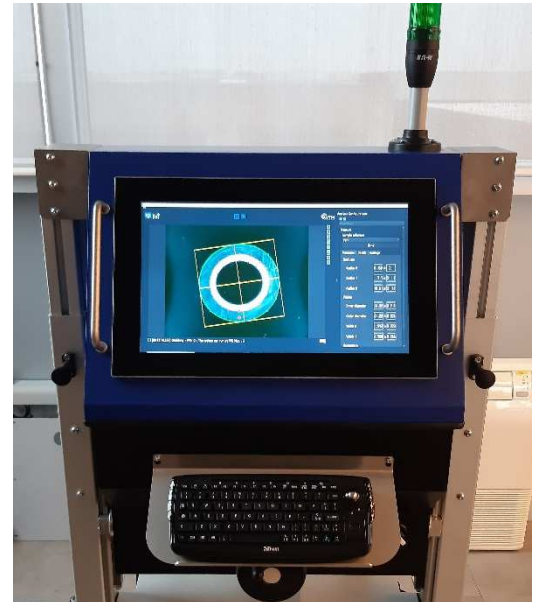
For completing the range of products that support cable manufacturers in the quality control process on their products, WTM has developed a specific device for the analysis on the geometry of section of cables, tube and pipes samples.

This system is designed for inspection of:

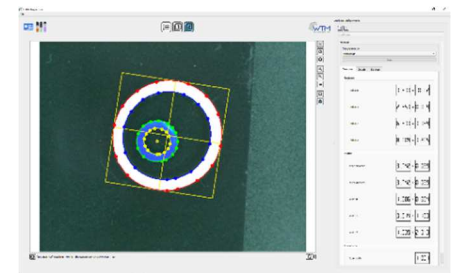
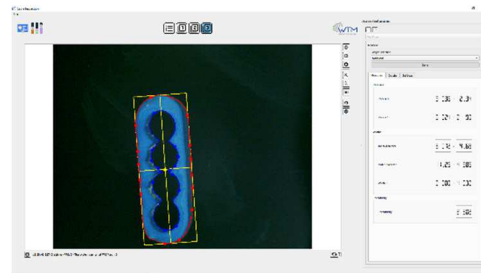
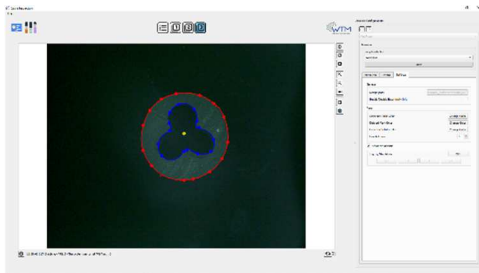
- one/two-layer tubes of different materials and sizes, with round section
- unipolar/multipolar cables with different insulating layers or sheaths

### Characteristics

- Stand-alone sealed case provided with industrial computer and touchscreen display
- Integration of up to 2 high resolution cameras
- Ring-light system, with direct and back-lighting
- Mechanical adjustable distance for 2D measurement focusing
- Very precise measurement thanks to perfect combination of camera and lens
- Easy setting and measuring procedure



### MEASURING SOFTWARE



Specific software for the analysis of the geometries of the layers that compose the tested samples. It is provided with intuitive interface displayed on the integrated monitor. Custom-made measurement recipes support the user to solve the criticalities of the various types of samples.

### Measurement process

- The measurement is performed one section at a time.
- The operator selects the recipe with the algorithm specifically developed for the sample under examination.
- The interface shows the acquisition of the outline of the single layers and the related measures processed (radius, spokes, internal and external diameters, thicknesses, eccentricity).
- The operator can manually adjust the identified outline, in case of errors in the detection of the profile due to inaccuracies in the cut of the sample.